

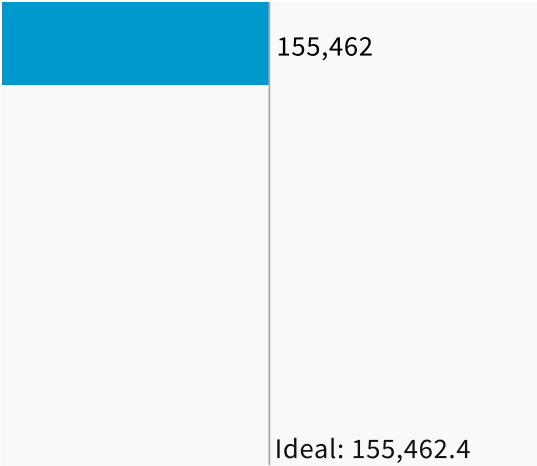
Population

Data Layers

Evaluation

▼ Population Balance

① Uses 2020 Decennial Census population with processing by Redistricting Partners on 2020 Blocks.

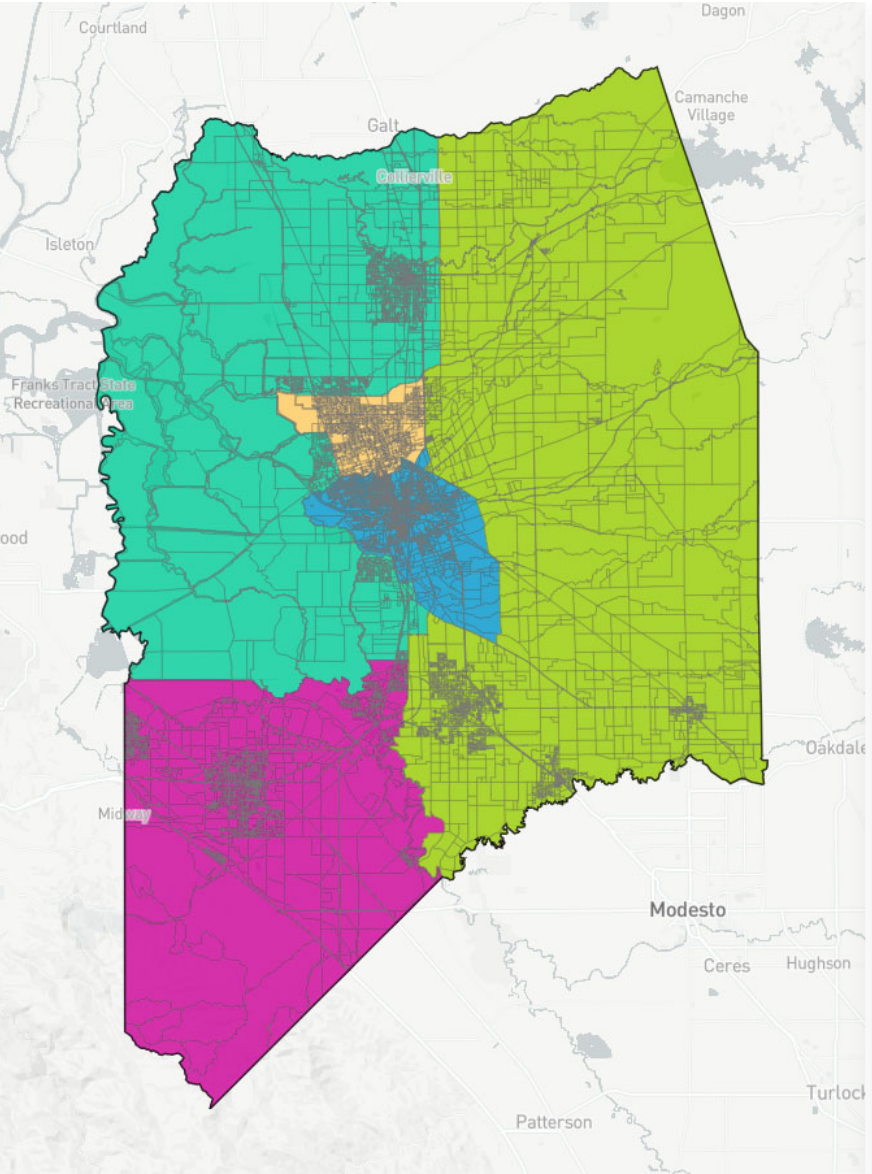


UNASSIGNED POPULATION:

621,850

MAX. POPULATION DEVIATION:

0%



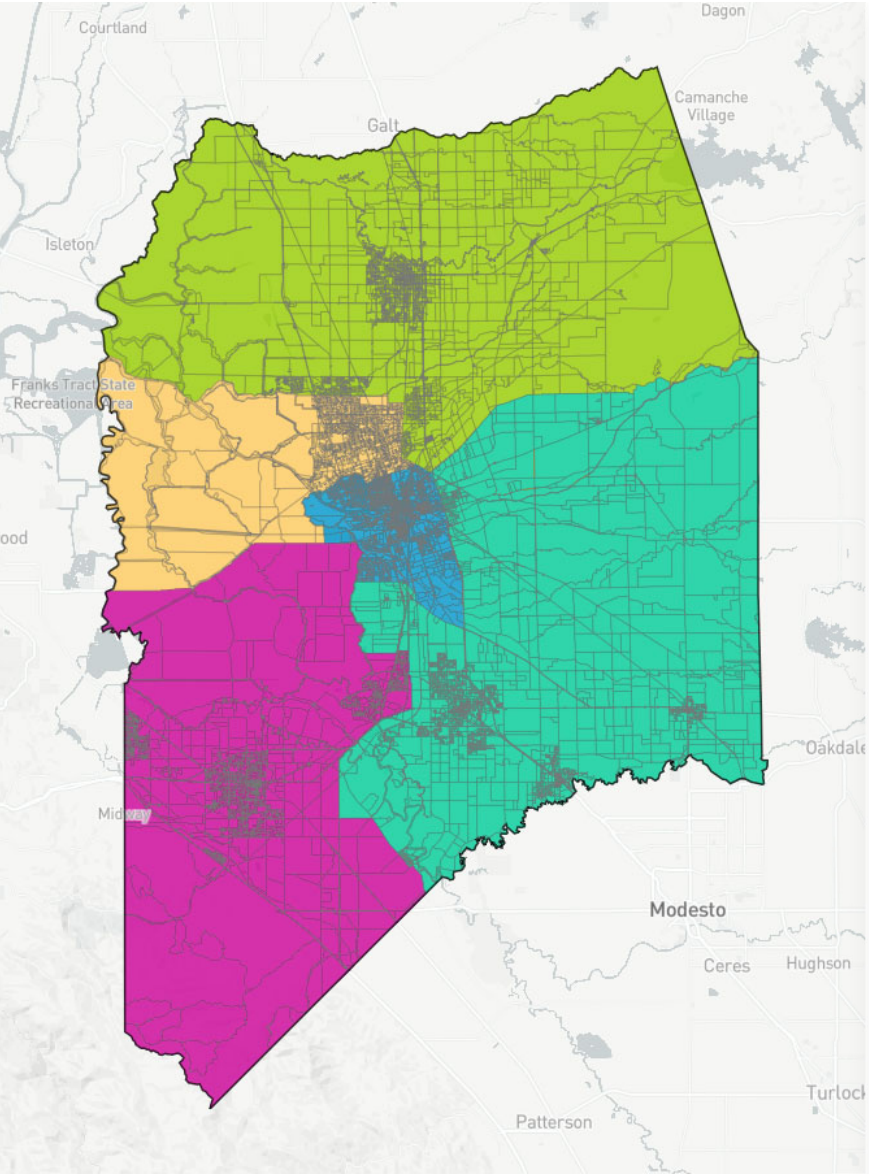
Population Data Layers Evaluation

Population Balance

① Uses 2020 Decennial Census population with processing by Redistricting Partners on 2020 Blocks.

|                  |         |
|------------------|---------|
|                  | 155,988 |
|                  | 155,268 |
|                  | 155,136 |
|                  | 155,568 |
|                  | 155,352 |
| Ideal: 155,462.4 |         |

UNASSIGNED POPULATION: 0  
MAX. POPULATION DEVIATION: 0.34%



Population    Data Layers    Evaluation

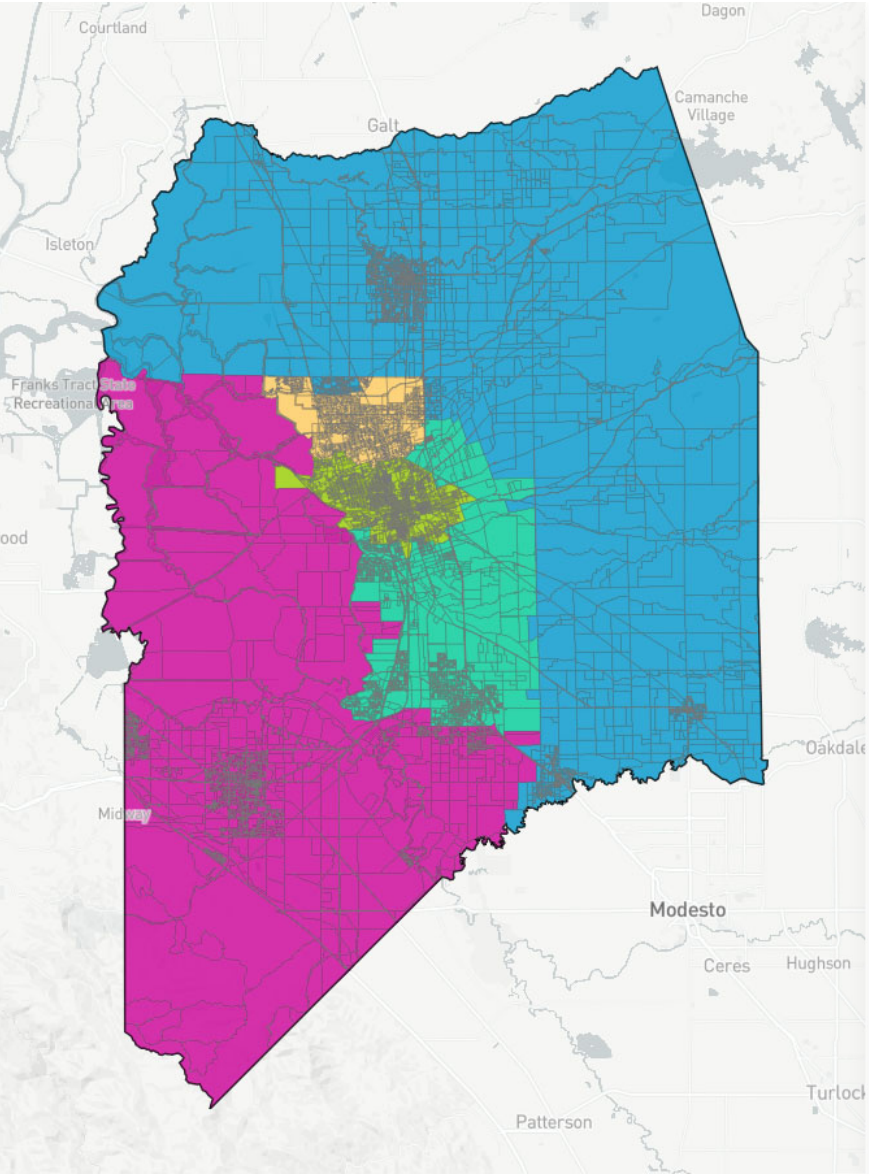
▼ Population Balance

① Uses 2020 Decennial Census population with processing by Redistricting Partners on 2020 Blocks.

|  |                  |
|--|------------------|
|  | 156,613          |
|  | 155,927          |
|  | 156,594          |
|  | 152,355          |
|  | 155,823          |
|  | Ideal: 155,462.4 |

UNASSIGNED POPULATION: 0  
MAX. POPULATION DEVIATION: 2%





Population

Data Layers

Evaluation

▼ Population Balance

① Uses 2020 Decennial Census population with processing by Redistricting Partners on 2020 Blocks.

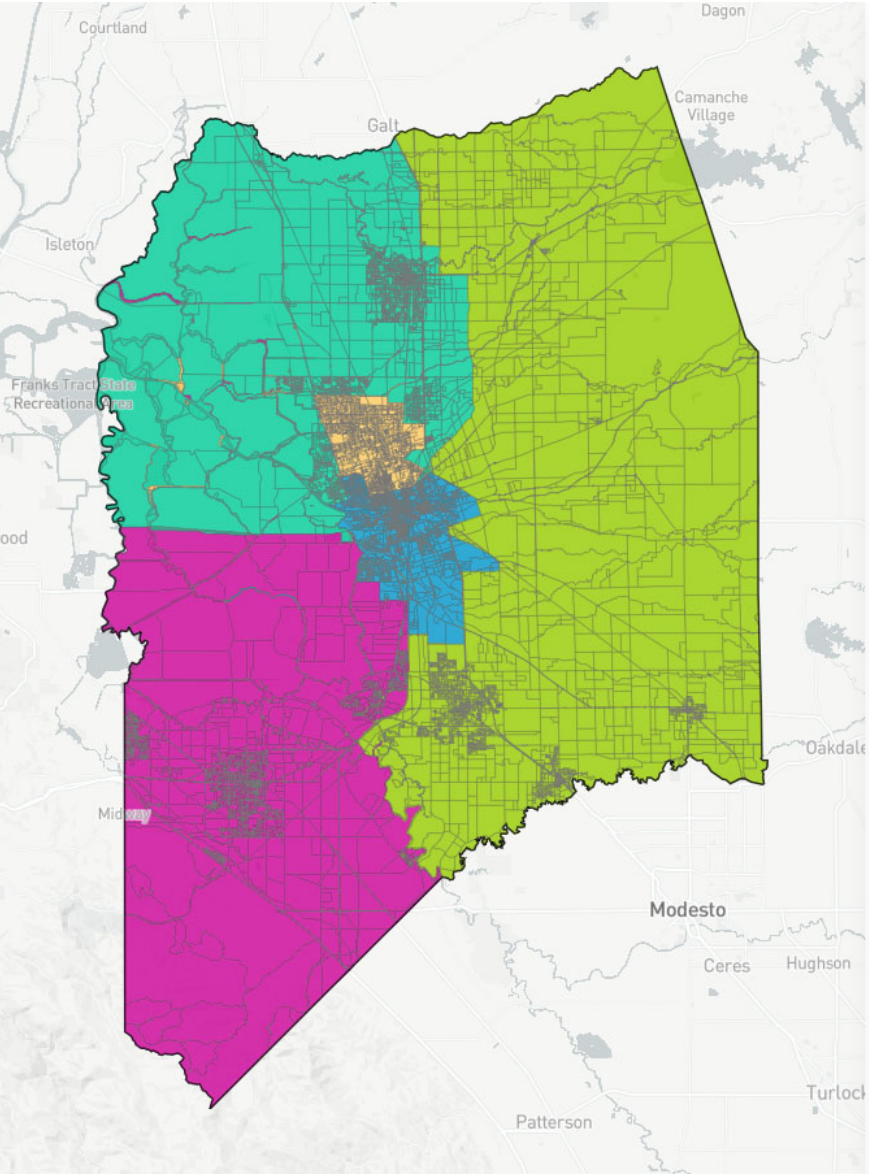
|  |                  |
|--|------------------|
|  | 155,442          |
|  | 155,464          |
|  | 155,462          |
|  | 155,441          |
|  | 155,462          |
|  | Ideal: 155,462.4 |

UNASSIGNED POPULATION:

41

MAX. POPULATION DEVIATION:

0.01%



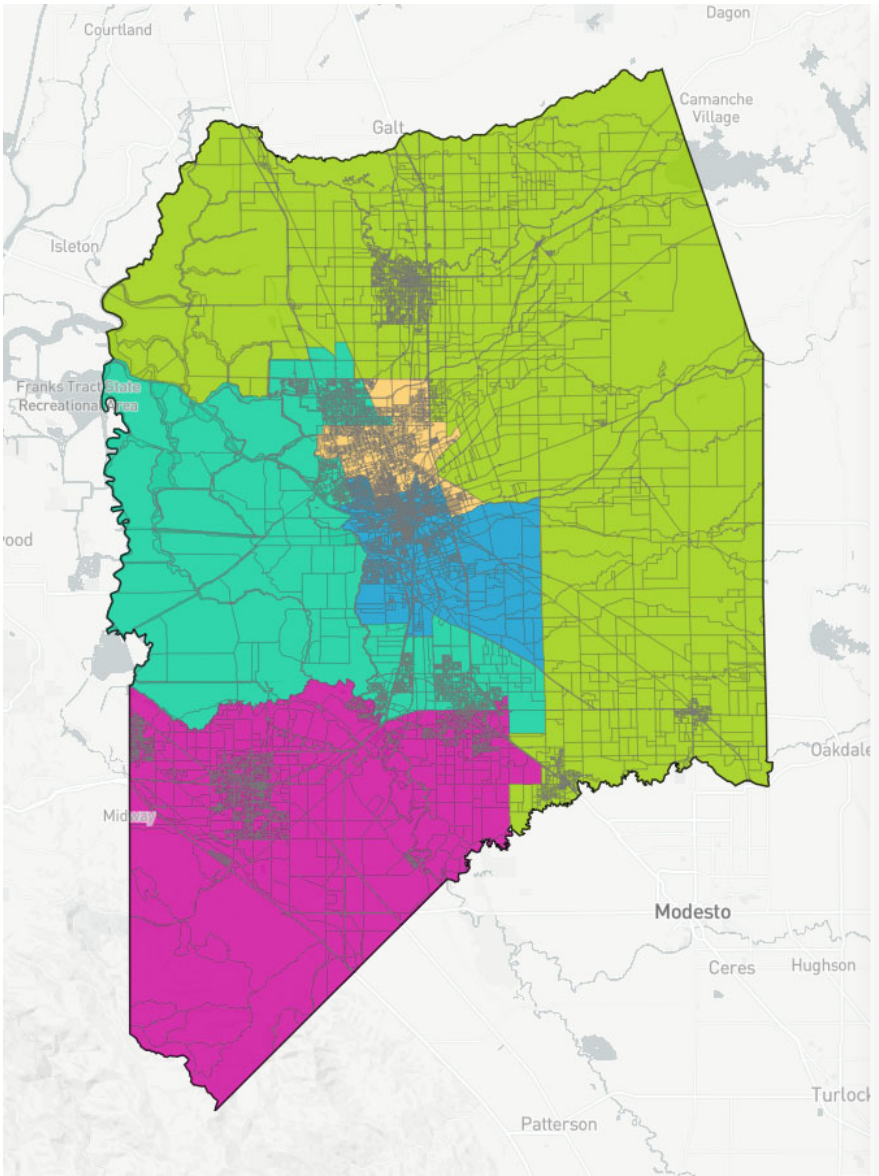
Population Data Layers Evaluation






Population Balance

① Uses 2020 Decennial Census population with processing by Redistricting Partners on 2020 Blocks.

|  |                  |
|--|------------------|
|  | 156,591          |
|  | 155,484          |
|  | 156,221          |
|  | 154,071          |
|  | 154,945          |
|  | Ideal: 155,462.4 |

UNASSIGNED POPULATION: 0  
MAX. POPULATION DEVIATION: 0.9%

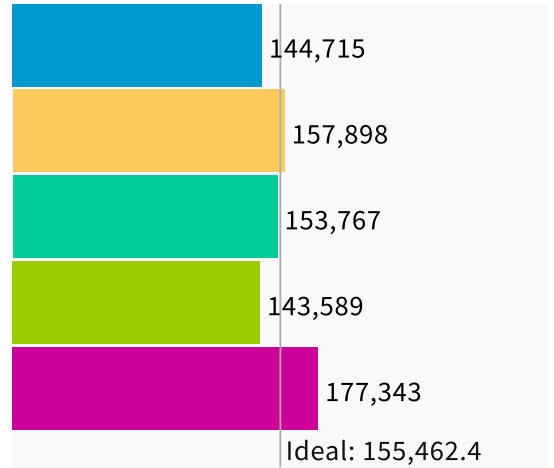




**Population** | Data Layers | Evaluation

### ▼ Population Balance

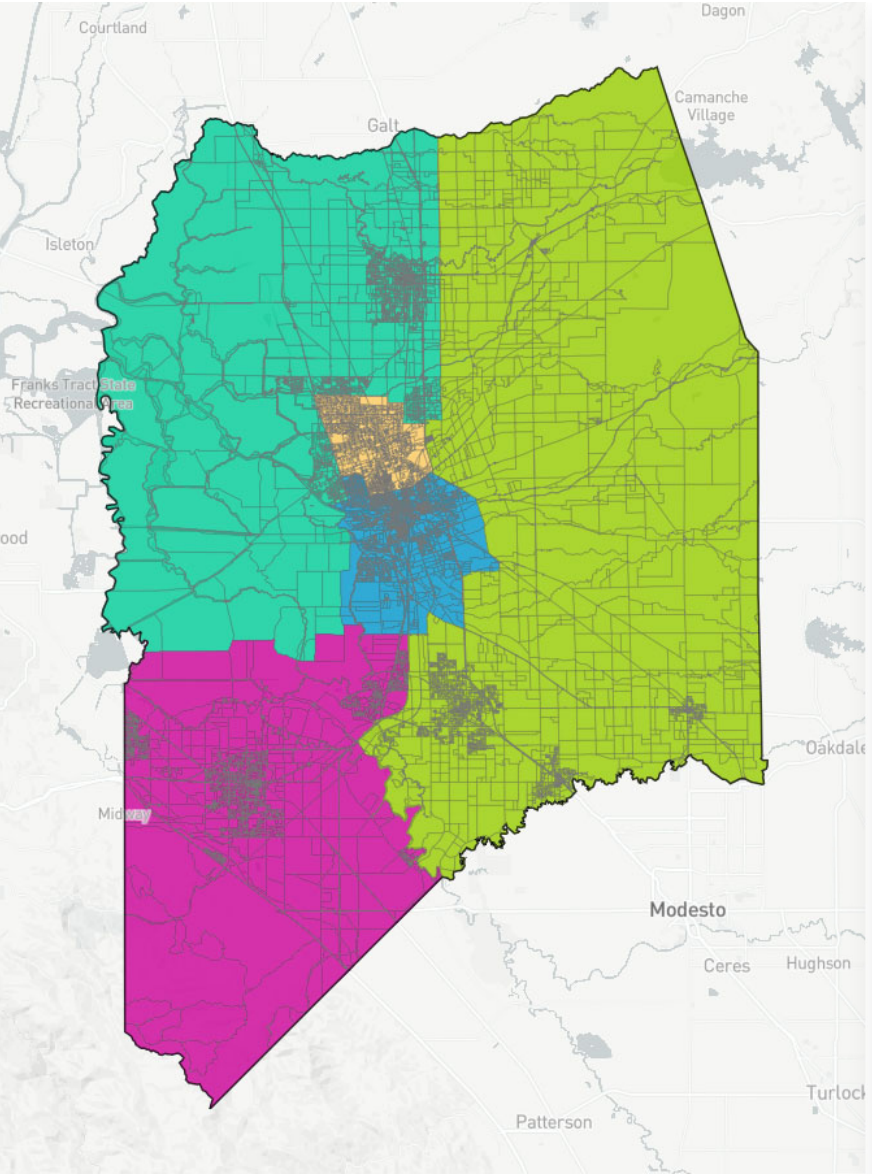
① Uses 2020 Decennial Census population with processing by Redistricting Partners on 2020 Blocks.



UNASSIGNED POPULATION: 0

MAX. POPULATION DEVIATION: 14.07%

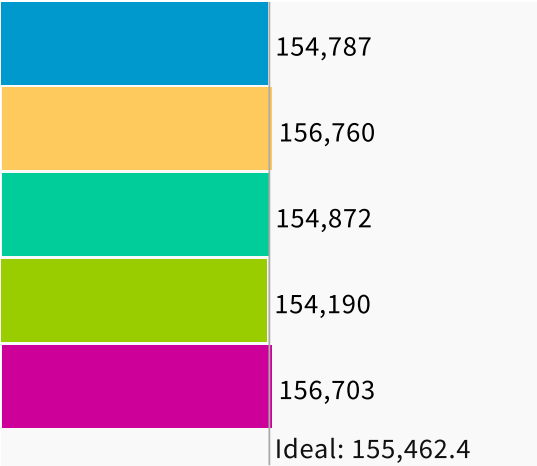




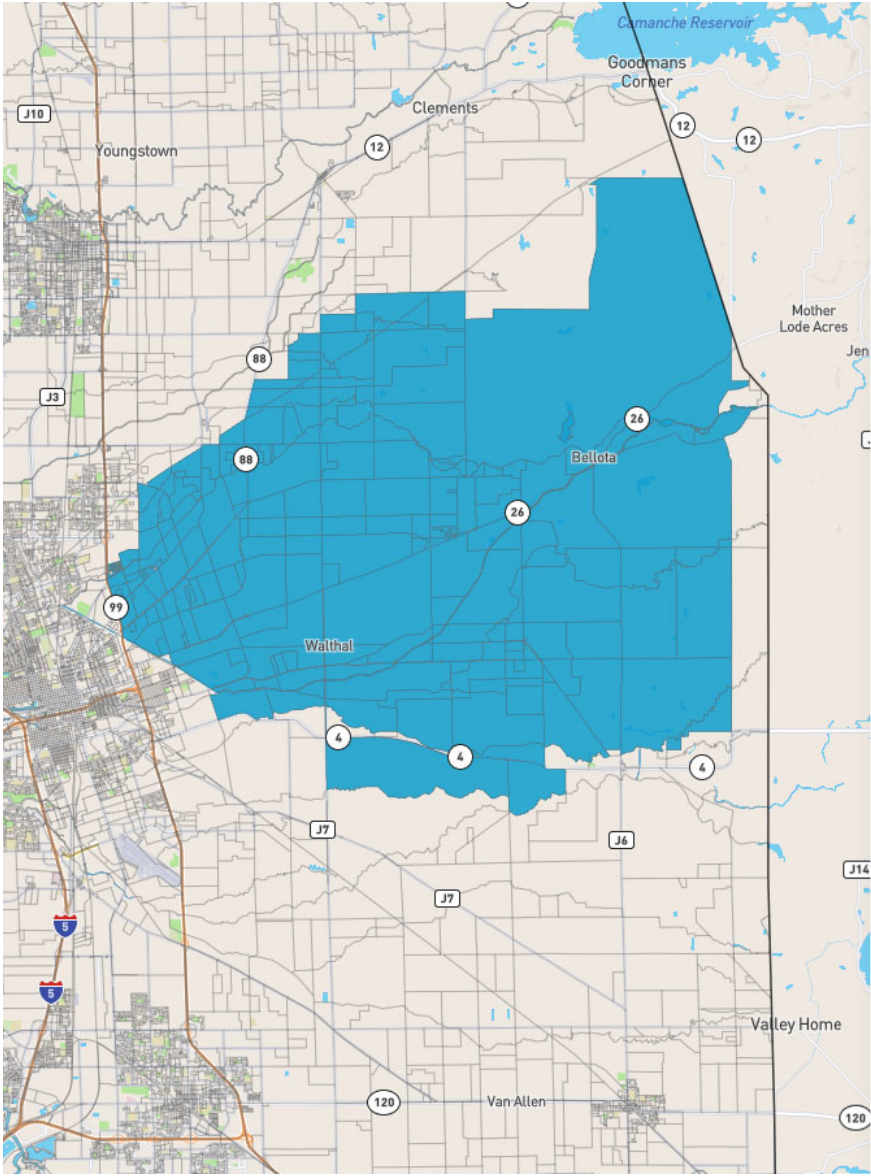
Population Data Layers Evaluation

Population Balance

① Uses 2020 Decennial Census population with processing by Redistricting Partners on 2020 Blocks.



UNASSIGNED POPULATION: 0  
MAX. POPULATION DEVIATION: 0.83%



Drawing   Data Layers   Evaluation

▼ Areas of Interest

SELECT

Linden

▼

NAME

Linden

Very cool and close community.

These details are updated automatically

▼ Important Places

New

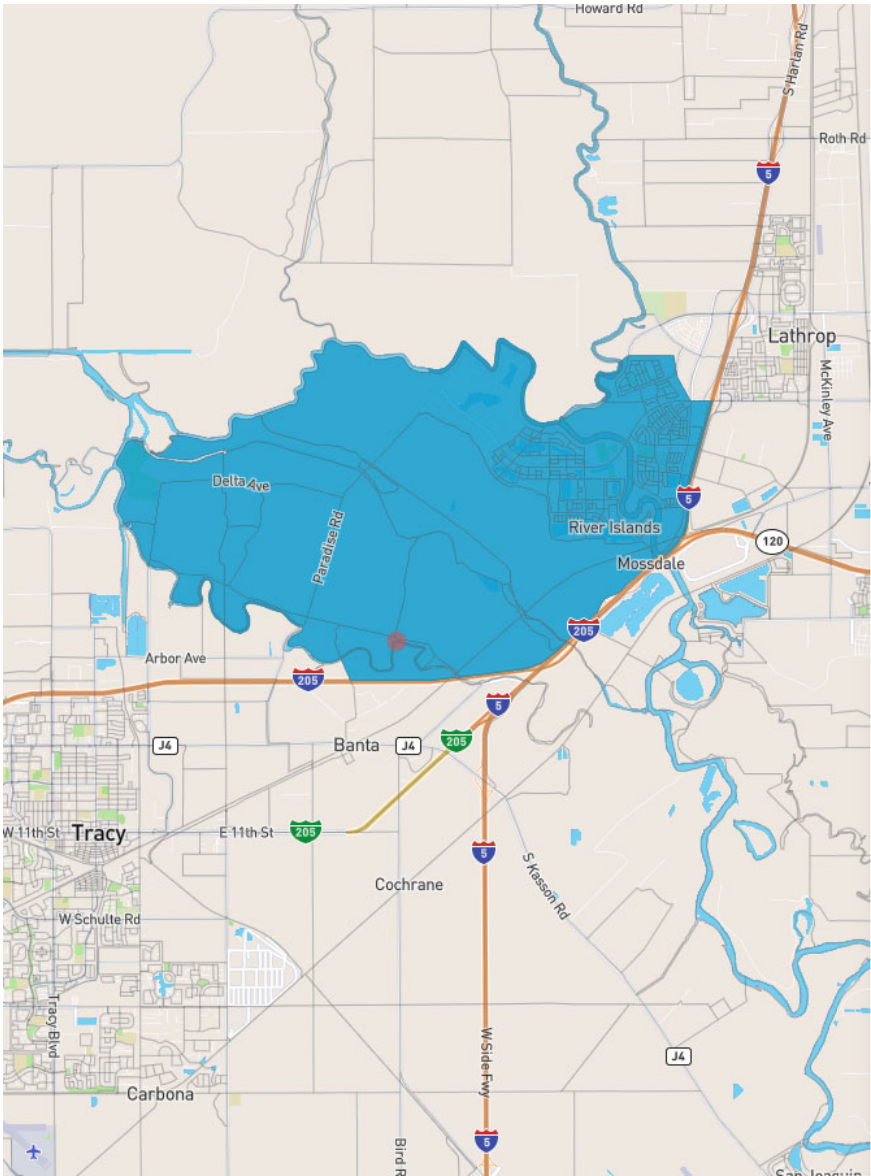


# Communities of Interest

 Linden

Very cool and close community.

---



Drawing      Data Layers      Evaluation

▼ Areas of Interest

SELECT

COMMUNITY AREA OF ...

NAME

COMMUNITY AREA OF RIVER ISLAND AN

5,000 acre community has been planned. A community comprised of neighborhoods, Schools, a 350-acre business campus, downtown retail area, with businesses, shops, and dining. Slated to be connected to the Tri-Valley and Silicon Valley hv ACF Train

These details are updated automatically

▼ Important Places



SELECT

Dell’Osso Farm

PLACE NAME

Dell’Osso Farm

The Dell’Osso Family Farm October event has grown into one of the most popular Halloween season destinations in the nation, with approximately 250,000 people visiting the site each October.

# Communities of Interest

## ● COMMUNITY AREA OF RIVER ISLAND AND AREA OF GROWTH

5,000 acre community has been planned. A community comprised of neighborhoods, Schools, a 350-acre business campus, downtown retail area, with businesses, shops, and dining. Slated to be connected to the Tri-Valley and Silicon Valley by ACE Train.

---

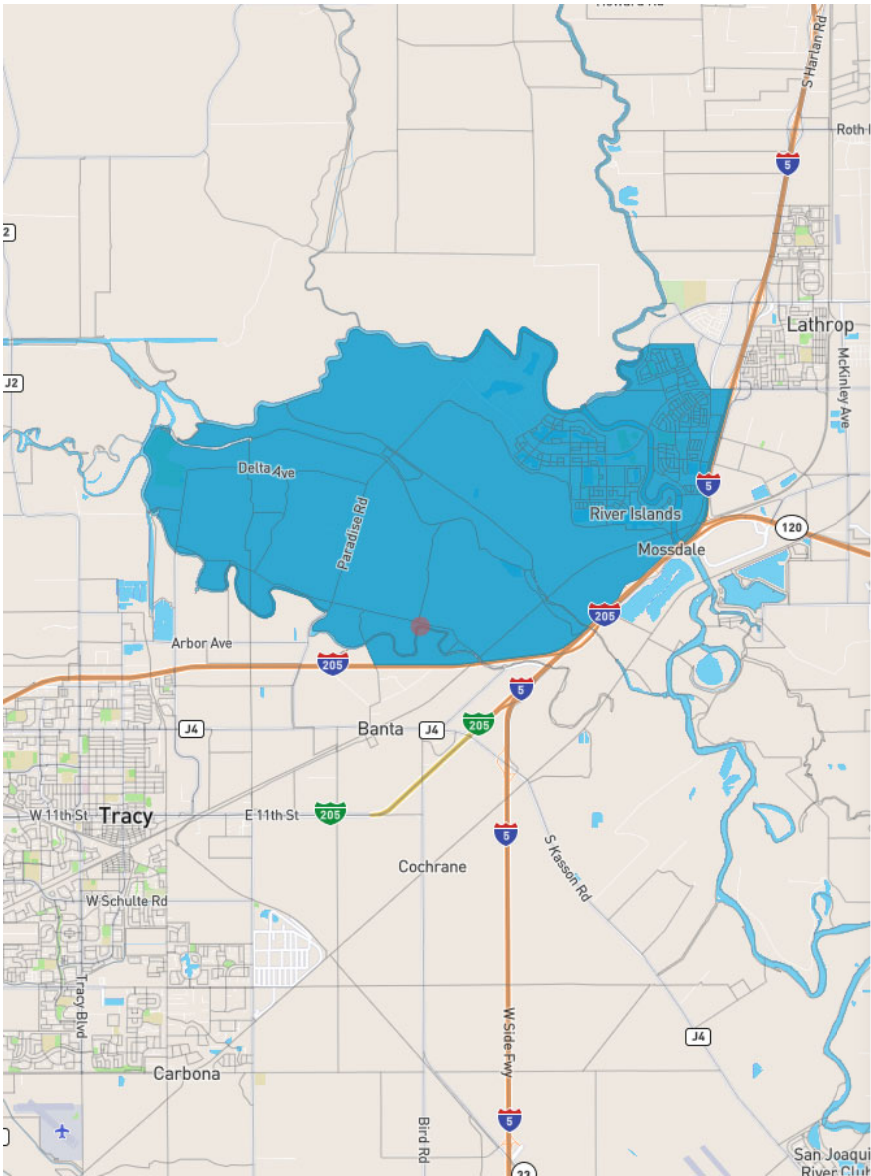
## Important Places






### Dell’Osso Farm

The Dell’Osso Family Farm October event has grown into one of the most popular Halloween season destinations in the nation, with approximately 250,000 people visiting the site each October.

---







Drawing

Data Layers

Evaluation

▼ Areas of Interest

SELECT

COMMUNITY AREA OF ...

NAME

COMMUNITY AREA OF RIVER ISLAND AN

5,000 acre community has been planned. . POSSIBLE TO UNDERWEIGHT THE DISTRICT THAT WOULD INCLUDE THIS COMMUNITY... GIVEN THE ANTICIPATED/EXPECTED POPULATION GROWTH

These details are updated automatically

▼ Important Places


 New

SELECT

Dell’Osso Farm

PLACE NAME

Dell’Osso Farm



The Dell’Osso Family Farm October event has grown into one of the most popular Halloween season destinations in the nation, with approximately 250,000 people visiting the site each October.

## Communities of Interest

### COMMUNITY AREA OF RIVER ISLAND AND AREA OF GROWTH

5,000 acre community has been planned. . POSSIBLE TO UNDERWEIGHT THE DISTRICT THAT WOULD INCLUDE THIS COMMUNITY... GIVEN THE ANTICIPATED/EXPECTED POPULATION GROWTH

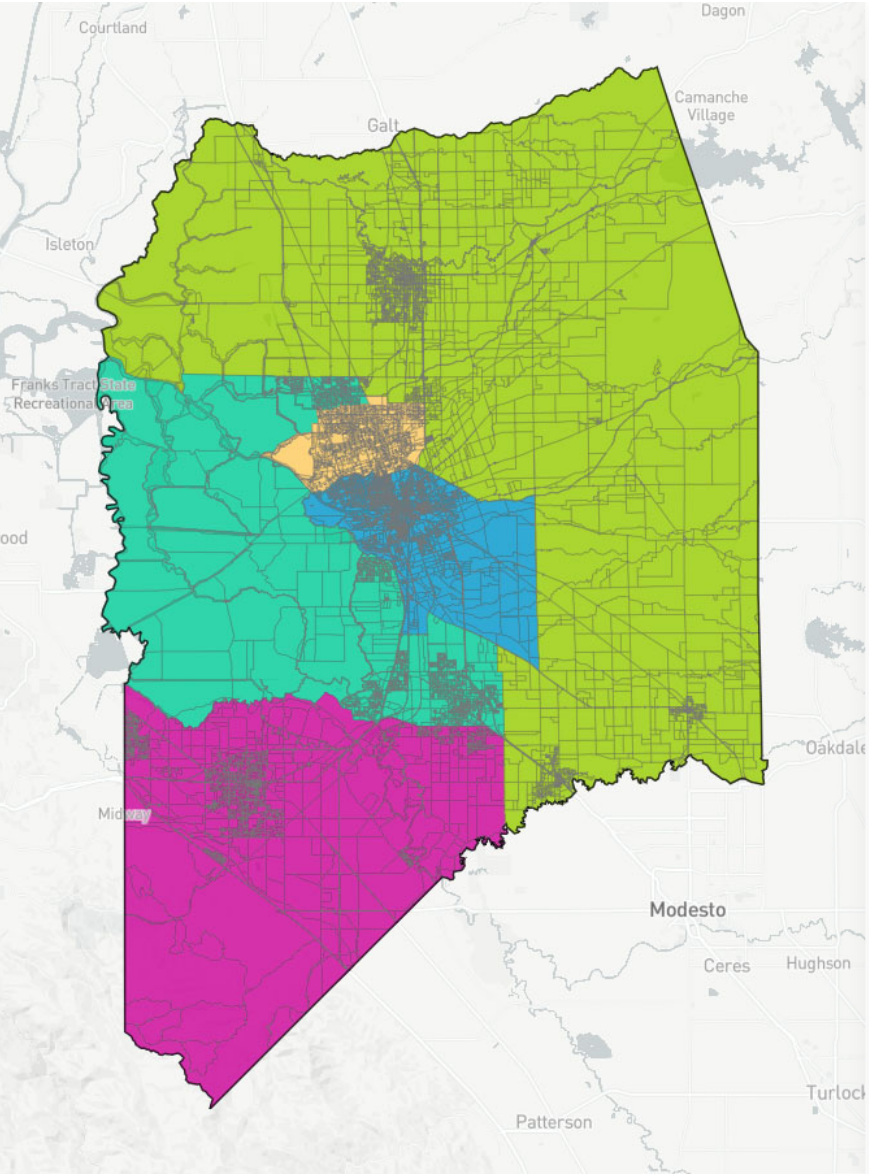
---

## Important Places

### Dell'Osso Farm

The Dell'Osso Family Farm October event has grown into one of the most popular Halloween season destinations in the nation, with approximately 250,000 people visiting the site each October.

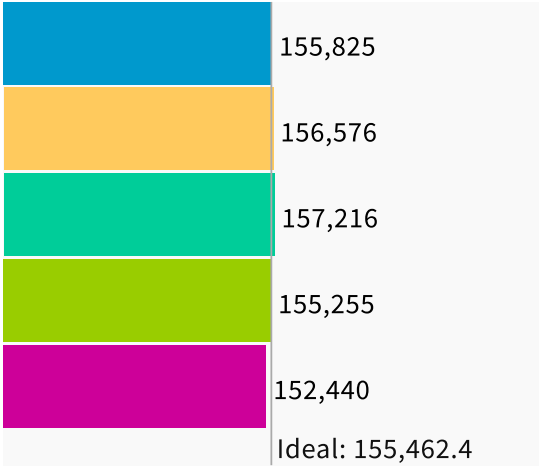
---



Population    Data Layers    Evaluation

▼ Population Balance

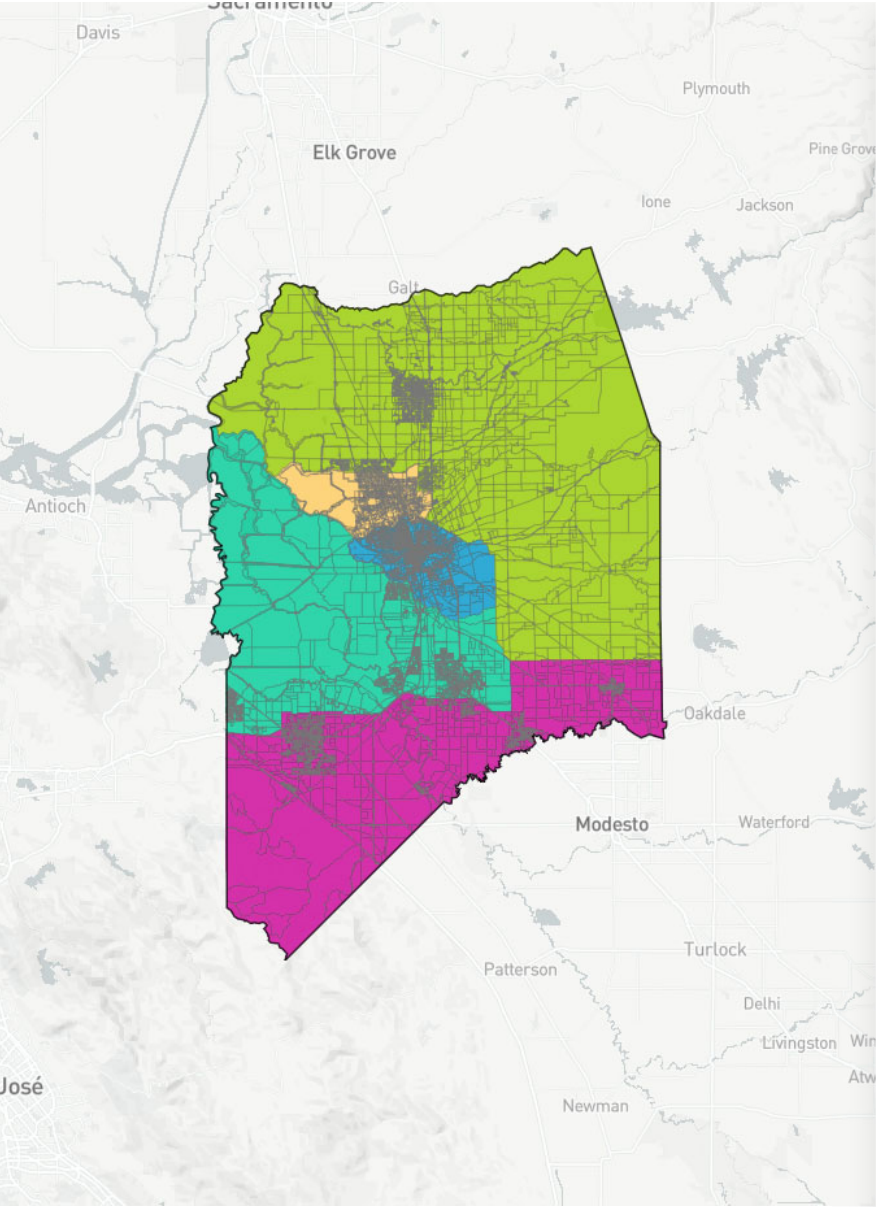
① Uses 2020 Decennial Census population with processing by Redistricting Partners on 2020 Blocks.



UNASSIGNED POPULATION: 0

MAX. POPULATION DEVIATION: 1.94%

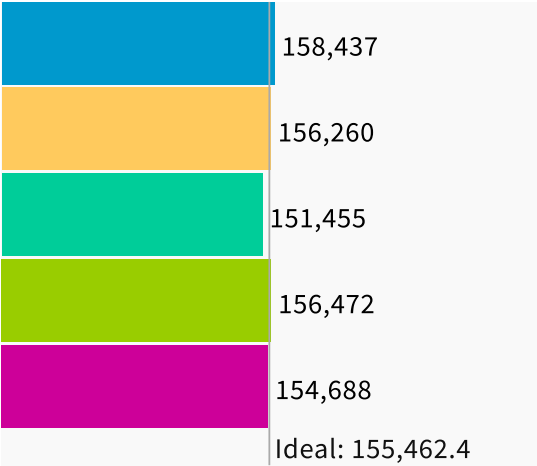




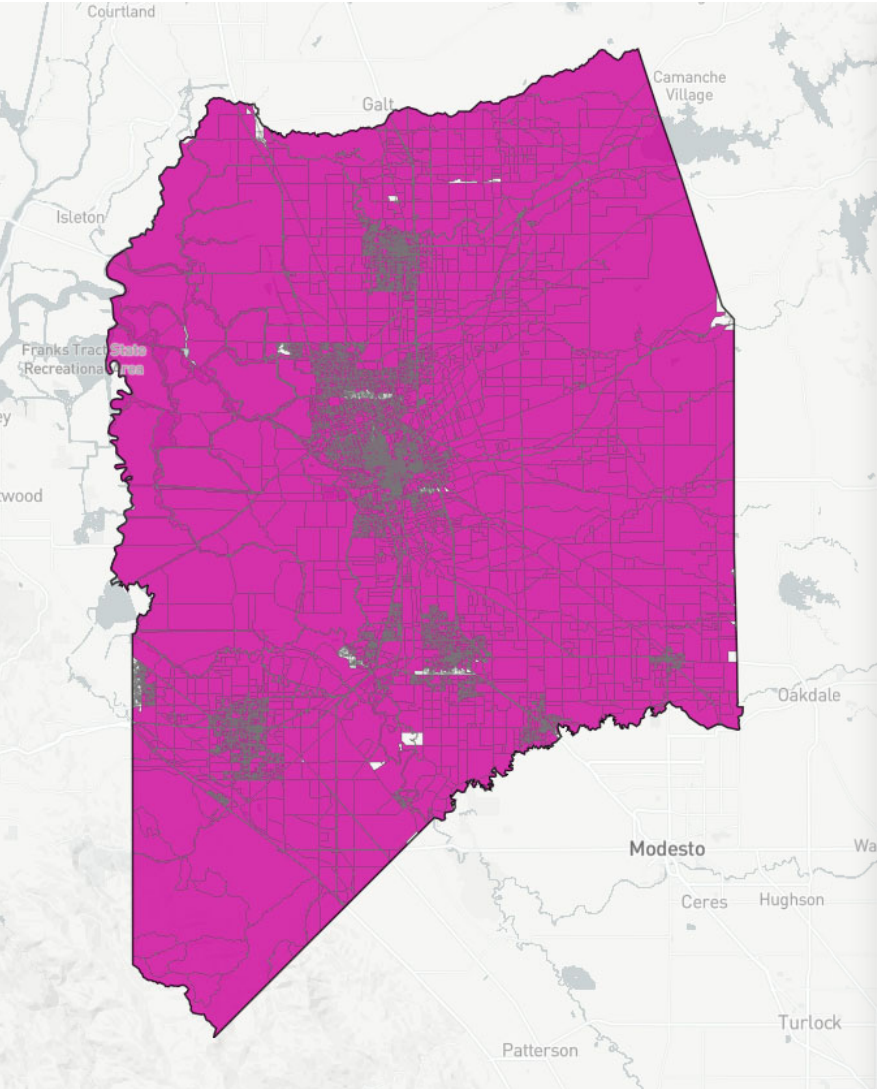
Population    Data Layers    Evaluation

▼ Population Balance

① Uses 2020 Decennial Census population with processing by Redistricting Partners on 2020 Blocks.



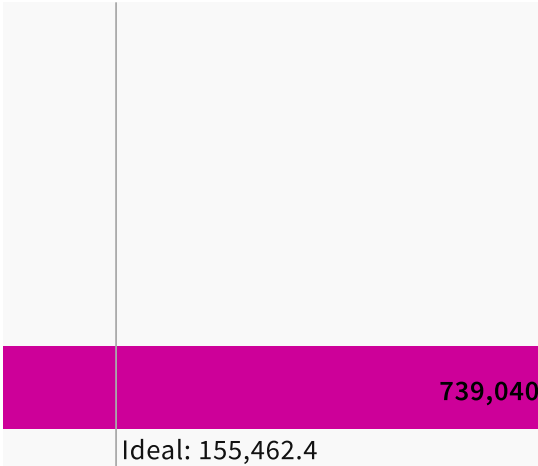
UNASSIGNED POPULATION: 0  
MAX. POPULATION DEVIATION: 2.58%



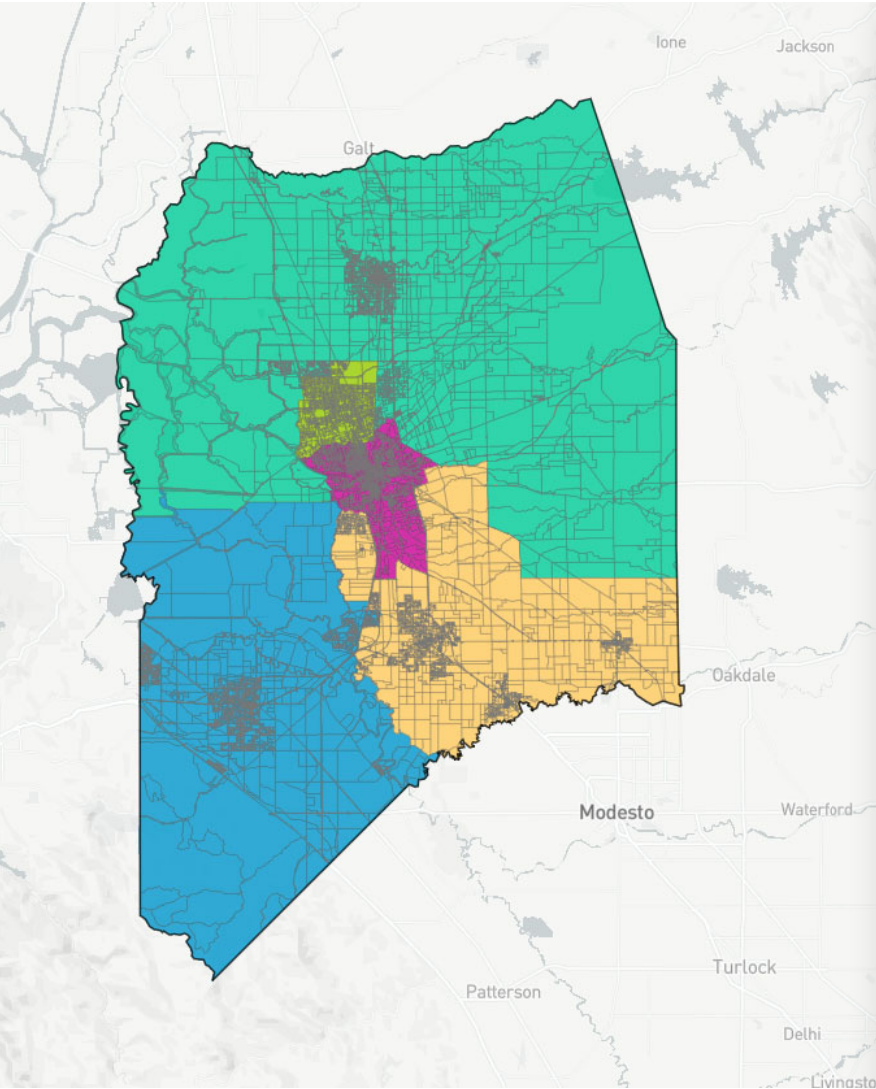
Population Data Layers Evaluation

Population Balance

① Uses 2020 Decennial Census population with processing by Redistricting Partners on 2020 Blocks.



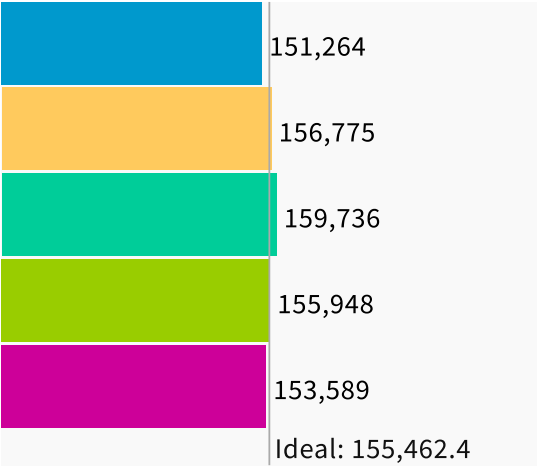
UNASSIGNED POPULATION: 38,272  
MAX. POPULATION DEVIATION: 375.38%



Population    Data Layers    Evaluation

▼ Population Balance

① Uses 2020 Decennial Census population with processing by Redistricting Partners on 2020 Blocks.



UNASSIGNED POPULATION: 0  
MAX. POPULATION DEVIATION: 2.75%